



## OFFICE & FACTORY ADDRESS

S.no.7/6a/1 Sairam Nagar Nr. Dhere Bungalow Manjari Road  
Hadapsar Pune/-412307

Contact Ph -9890259854 / 8149791994

[Balaji@yashshreeengineering.com](mailto:Balaji@yashshreeengineering.com)

[Balajisalgar7931@gmail.com](mailto:Balajisalgar7931@gmail.com)

[www.yashshreeengineering.com](http://www.yashshreeengineering.com)

[www.yashshreeengineering.co.in](http://www.yashshreeengineering.co.in)



**Team:**

- The team consists of highly qualified professional and dedicated members with more than 10 years of experience handling Tensile membrane structures.
- The design team has members who have been educated and trained in Europe and have worked on both Simple small structures and also large complicated structures.
- The detailing team has members who have worked on projects of varying complications and producing drawings which are easy to read and understand paying attention to detail.
- The fabrication team has members who have vast experience in handling membrane and take utmost care to ensure precision and excellent quality of work.

The installation team has members who are capable of installing membrane structures of any size at any height with great control and planning ensuring a totally wrinkle-free ideally pre-stressed tensile structure. |

**Undertaking:**

The company has adopted a high-quality policy wherein quality checks are conducted at every stage to ensure a final output which is elegant, wrinkle-free, safe, durable, visually pleasing and acceptable to both the client and architect.

Stages:

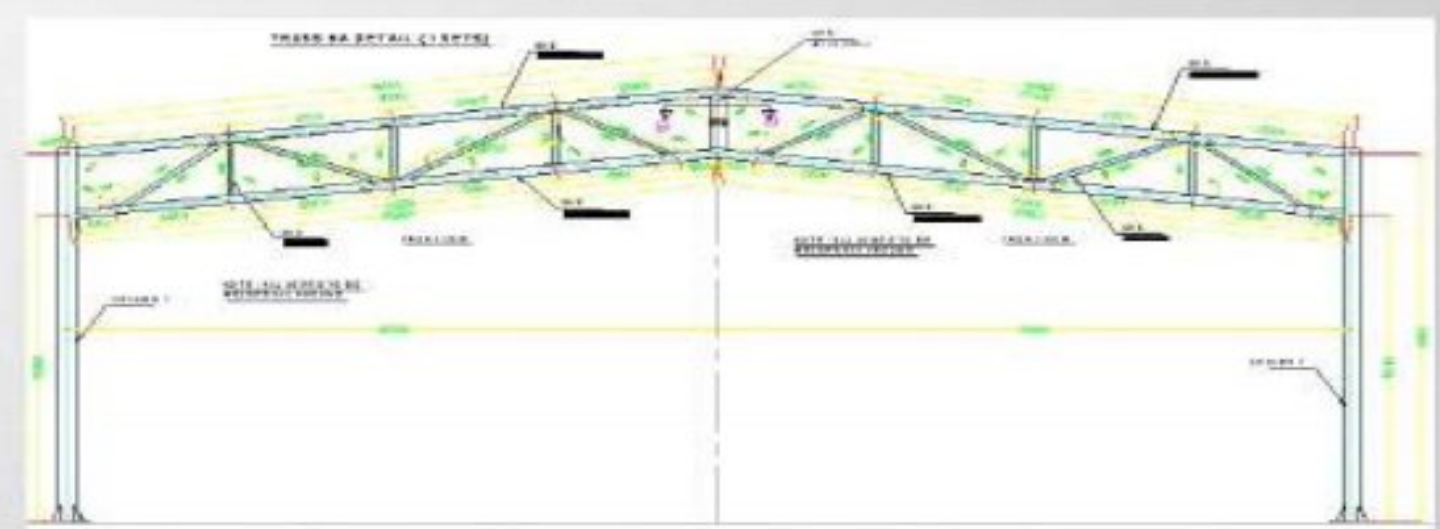
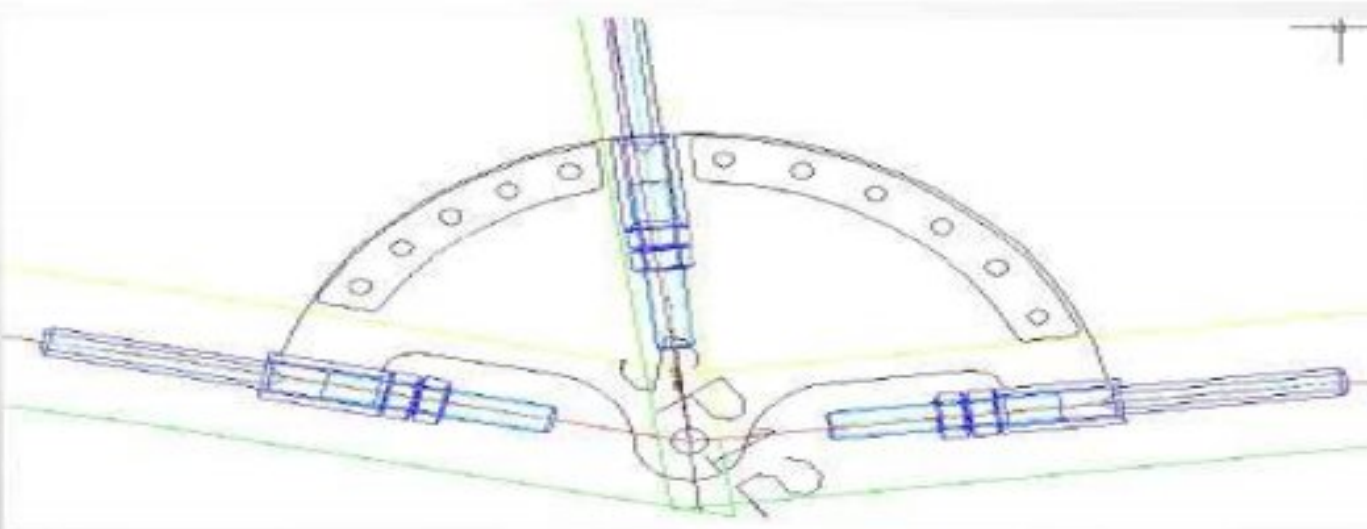
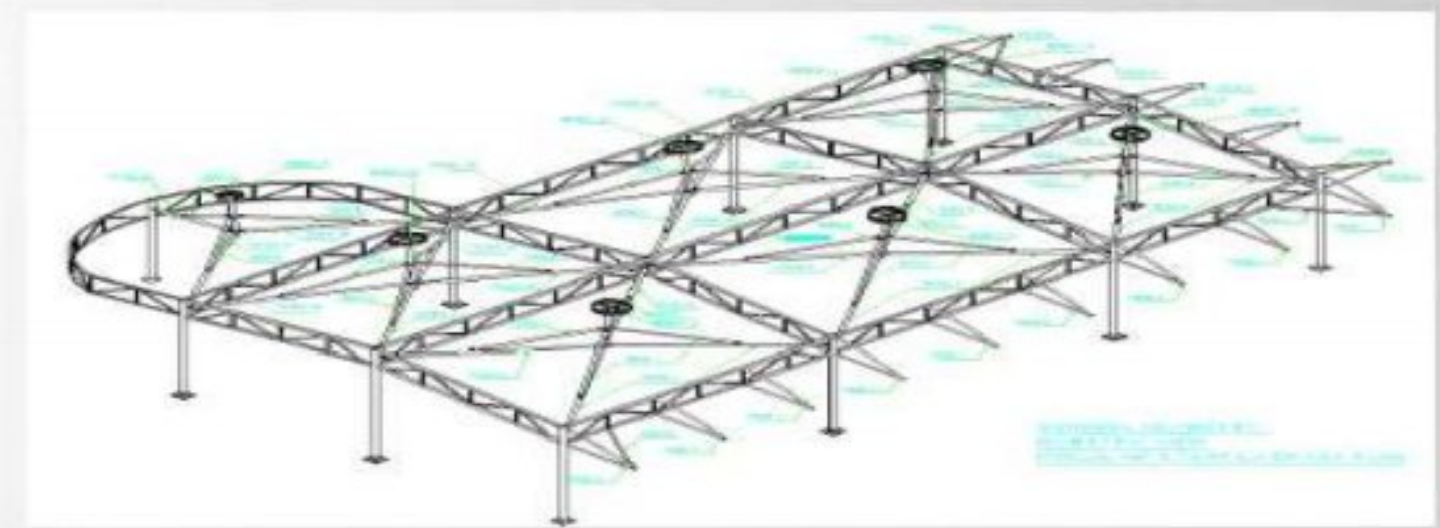
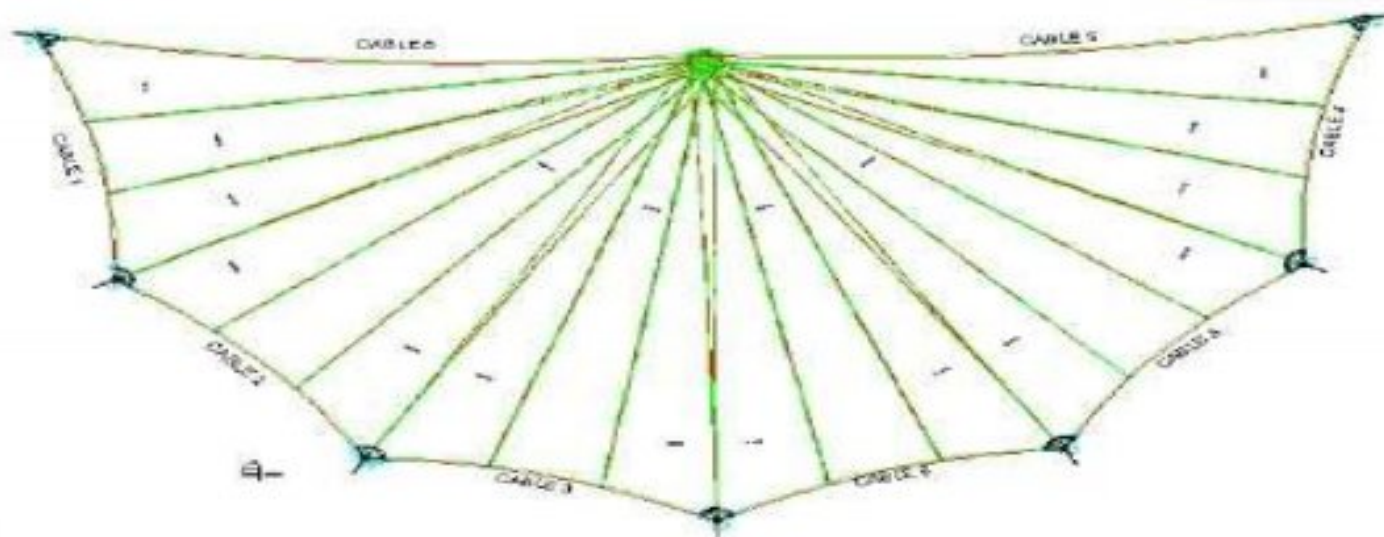
A successful tensile structure consists of the following stages:

- Concept and visualization
- Analysis of the tensile structure
- Design of the supporting structure
- Generation of membrane cutting patterns, detailing of supporting structure and membrane fixing details
- Installation and finishing of the tensile membrane structure
- Handover of the tensile membrane structure
- Maintenance of the tensile membrane structure

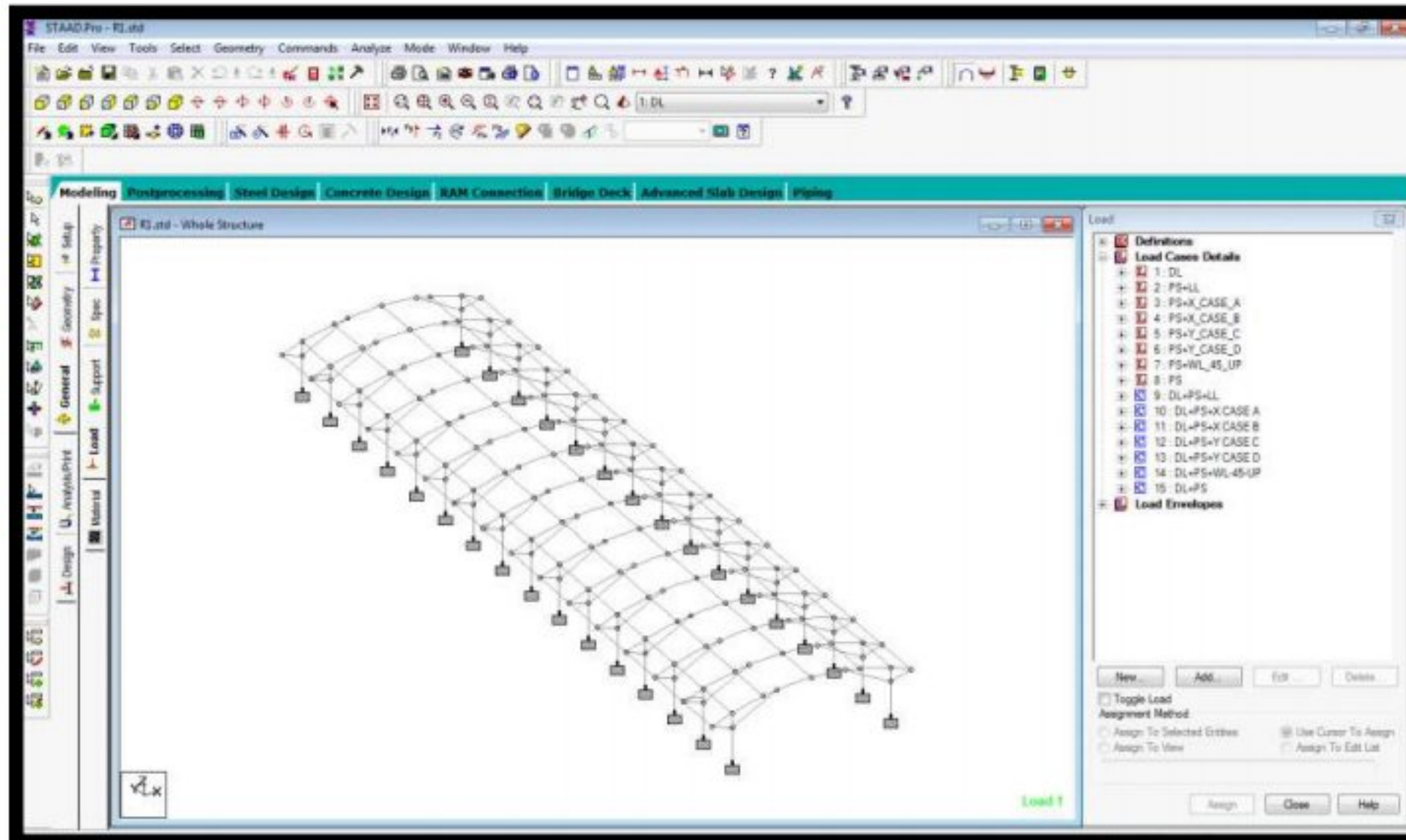
## ANALYSIS AND DESIGN

- FORTEN 4000 (NON LINEAR TENSILE MEMBRANE STRUCTURE DESIGN SOFTWARE)
- STAAD PRO V8i (STEEL STRUCTURE ANALYSIS)

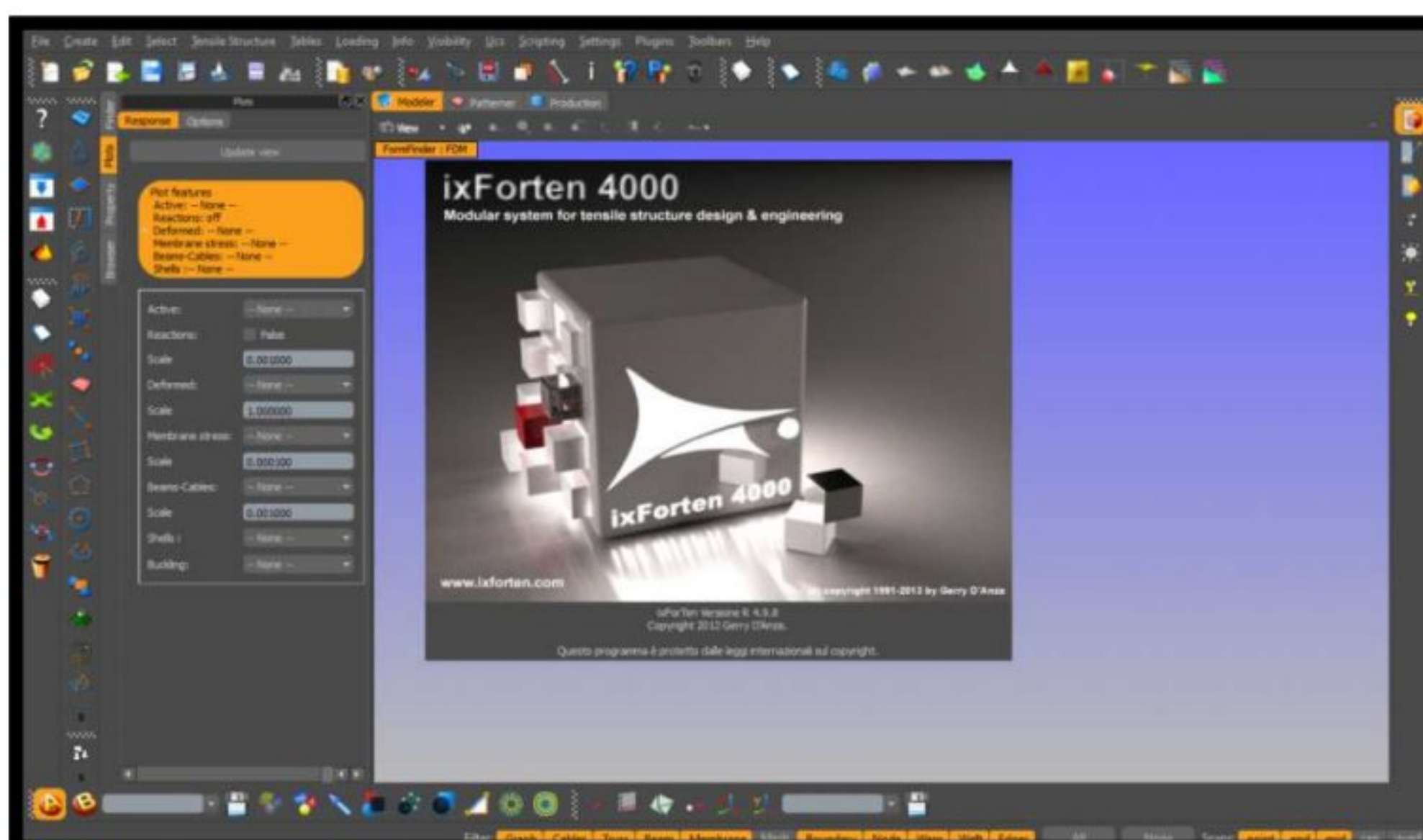
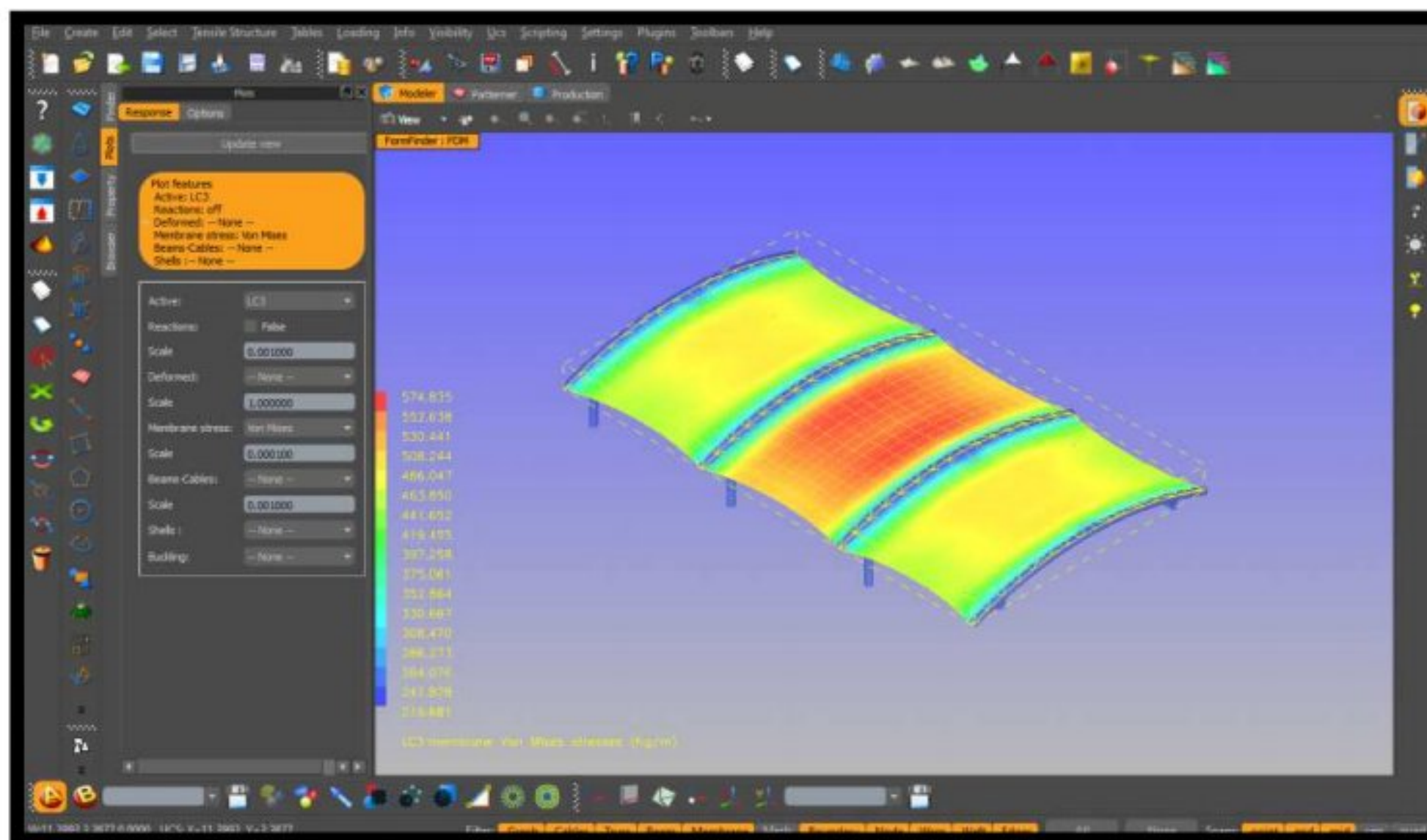
Generation of membrane cutting patterns, detailing of supporting structure and membrane fixing details



## SOFTWARES



Staad Pro – V8i – Steel Structure  
Designing Software  
IxForten 4000 – Specialized Tensile  
Structure Designing Software



## MEMBRANE – CUTTING & H.F. WELDING





## **PROJECTS DONE BY YASHSHREE ENGINEERING**

1. IOCL refinery Panipat Haryana.
2. PWD Projects Nath Mandir Paithan
3. parag Agro industrial Pvt.ltd
4. Gemini homes Ltd
5. ZF India
6. Mr. Kapil Gandhi (Sigma One)
7. Nyati Group
8. Agarwal group Mira Bhayandar
9. Salasar builders Mira Bhayandar
10. .Paranjpe builder Hinjewadi Blue Ridge
11. Solapur Railway Station Project
12. Guru Nanak Govind Singh College Chennai
13. Utsav builder
14. Landmark Group
15. Majestica group
16. Lunkad Builders
17. Raviraj group
18. Citi-In Hotel Baramati
19. Kingston builder Surat
20. Vidya Vihar University Chandrapur
21. Big Cafe Mercury Chennai
22. DY Patil University
23. Sanjay Ghodawat College
24. A One group
25. Rangwala Khan Mumbai
26. Pranic healing Yoga Centre, Tamhini.
27. Gajanan Kamte
28. Top in Town hotel Belgaum
29. Rajaji restaurant and bar Kalyan Murbad Road
30. Landmark Group Wakad Pune

**IOCL (Panipat) – Tensile Roof Attria Structure (20000 Sq. Feet)**





**IOCL (Panipat) – Tensile Roof Attria Structure (20000 Sq. Feet)**



## Tensile Fabric Project Nath Mandir Paithan



**Tensile Fabric Project Nath Mandir Paithan**



**Tensile Fabric Project Solapur Railway Station**



**Bus Terminal (Sinnar) – Tensile Inverted Conic Structure**



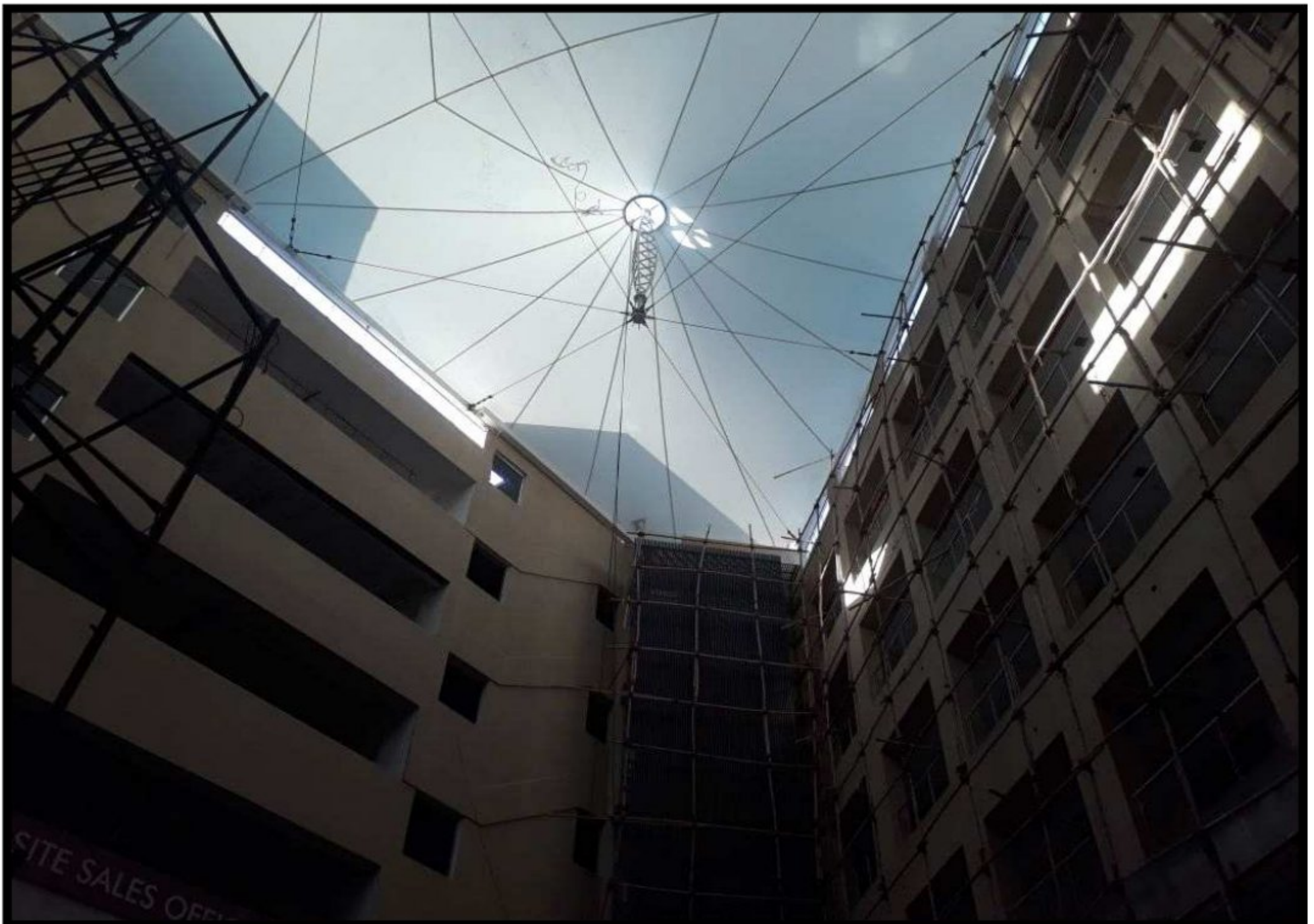
**Rajaji restaurant and bar - Kalyan Murbad Road – Tensile Conic Structure**



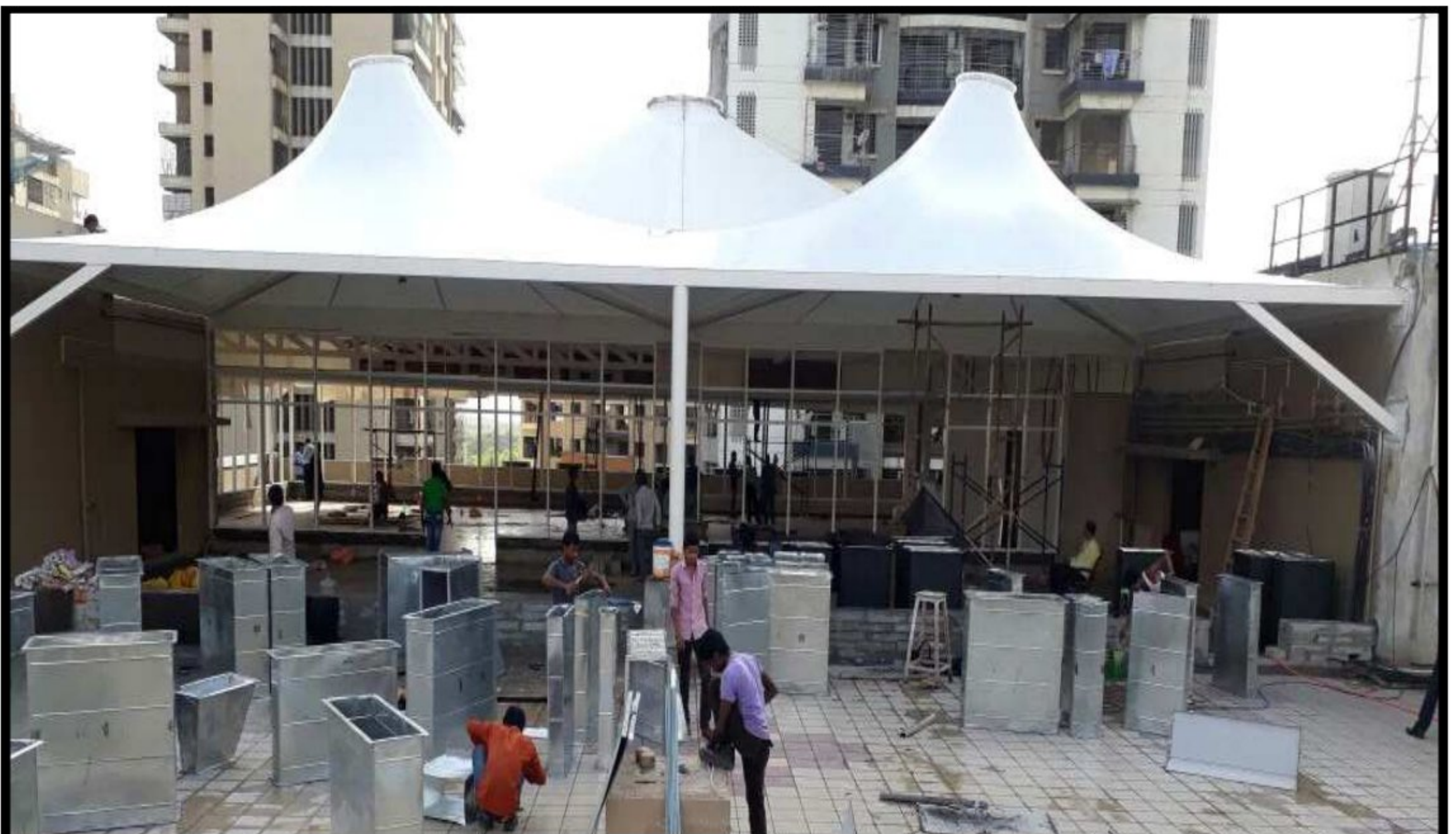
**Rashmi Shashtra Bunglow - Ahmadabad – Tensile Vault Structure**



**Landmark Group (Wakad Pune) – Tensile Roof Attria Structure –  
Cable Suspended Masts (3500 Sq. Feet)**



Salasar Builders (Mira Bhayandar) – Tensile Roof Cafeteria Structure  
(7500 Sq. Feet)





Tensile Roof Cafeteria Structure (7500 Sq. Feet)



# YASHSHREE ENGINEERING



**Hotel Raavee Exotica ( Loni Kalbhor Pune)**



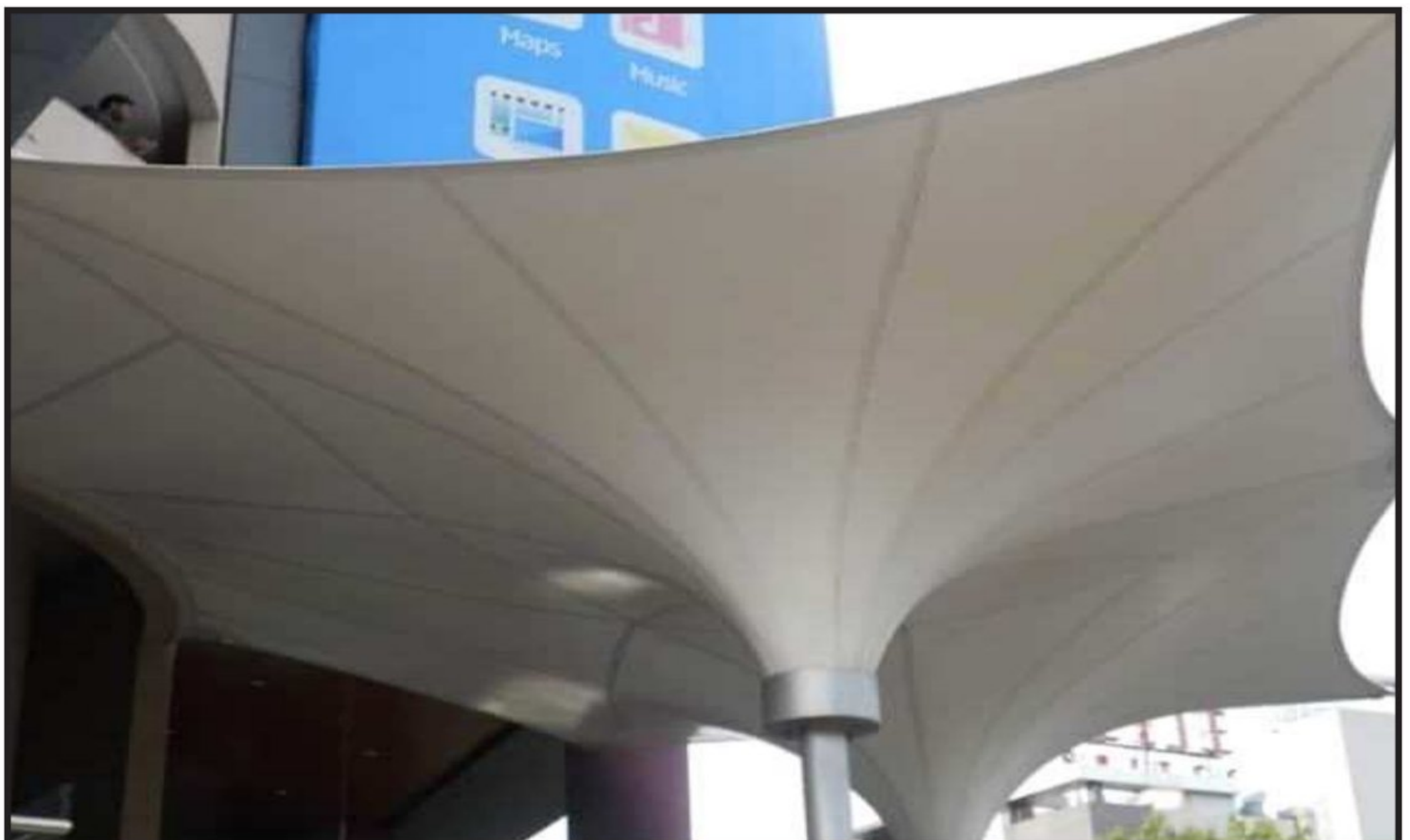
**Tensile Fabric Project Hotel**



**Ravi Raj Group – Tensile Inverted Conic Structure – Entry Gate**



**Lunkad Builders – Koregaon Park – Tensile Inverted Conic Structure**



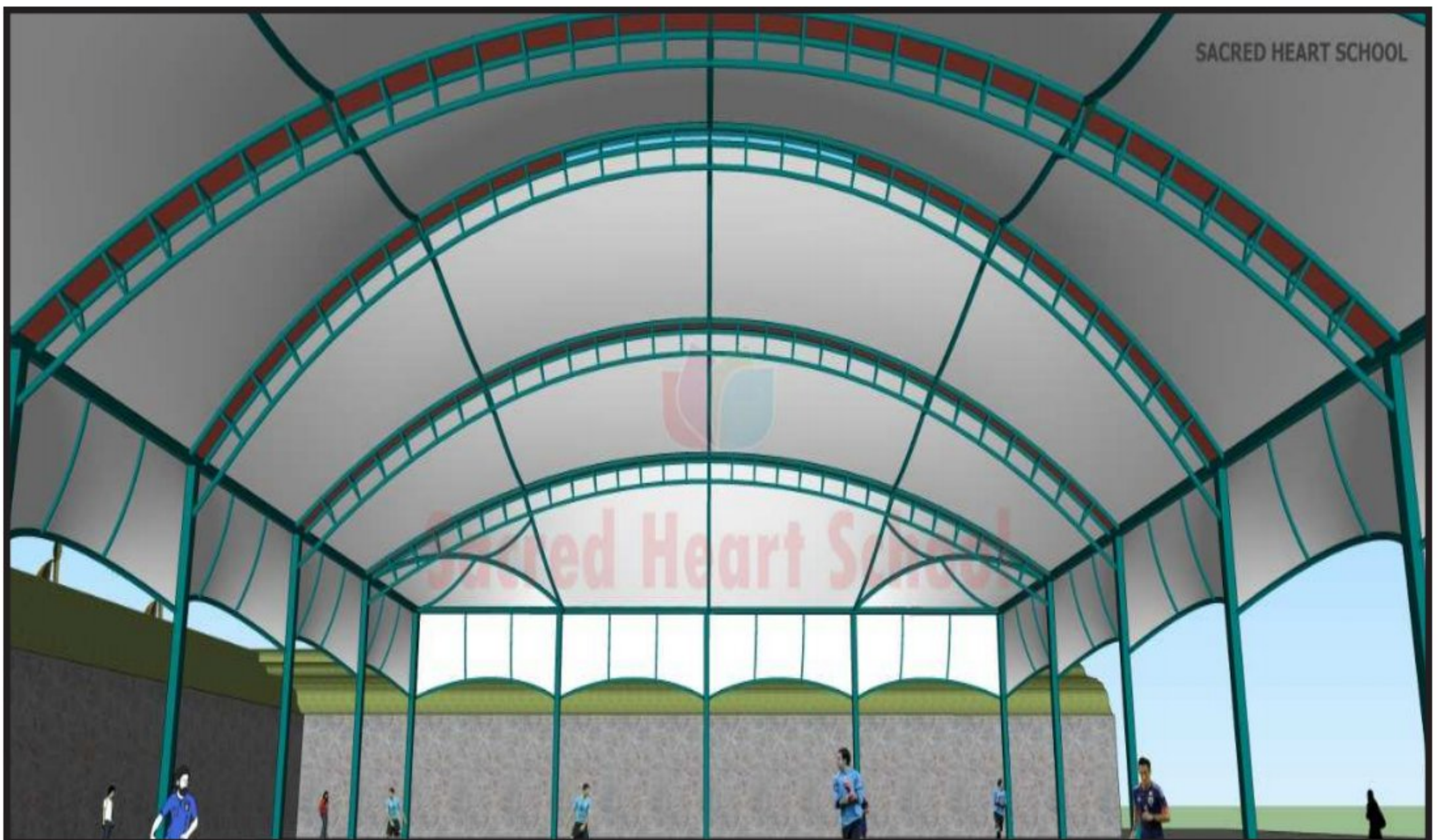
**White House – Karjat – Tensile Tent Structure**



**Tensile Fabric Project**



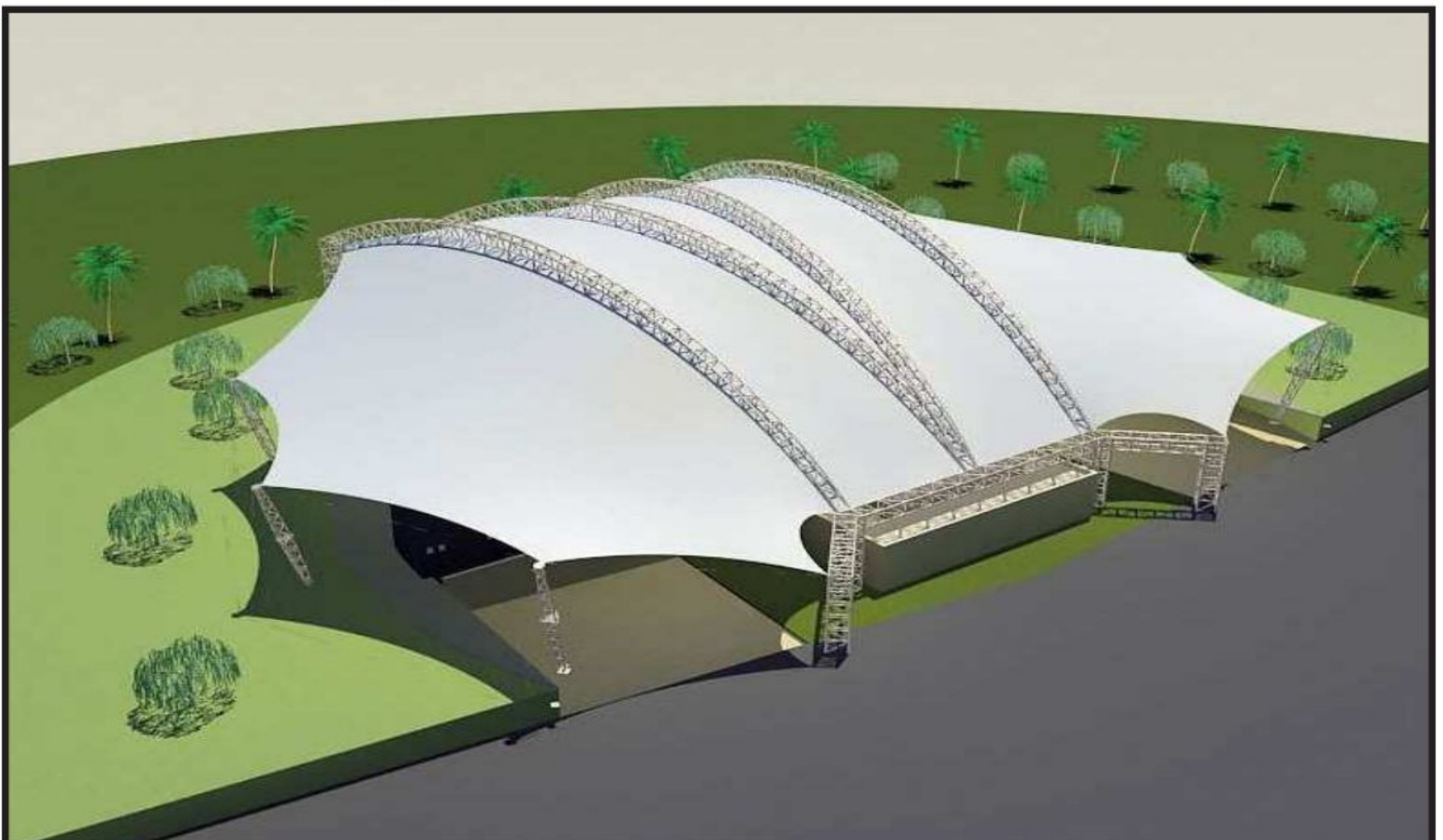
## Tensile Fabric Project



## Tensile Fabric Project Hotel

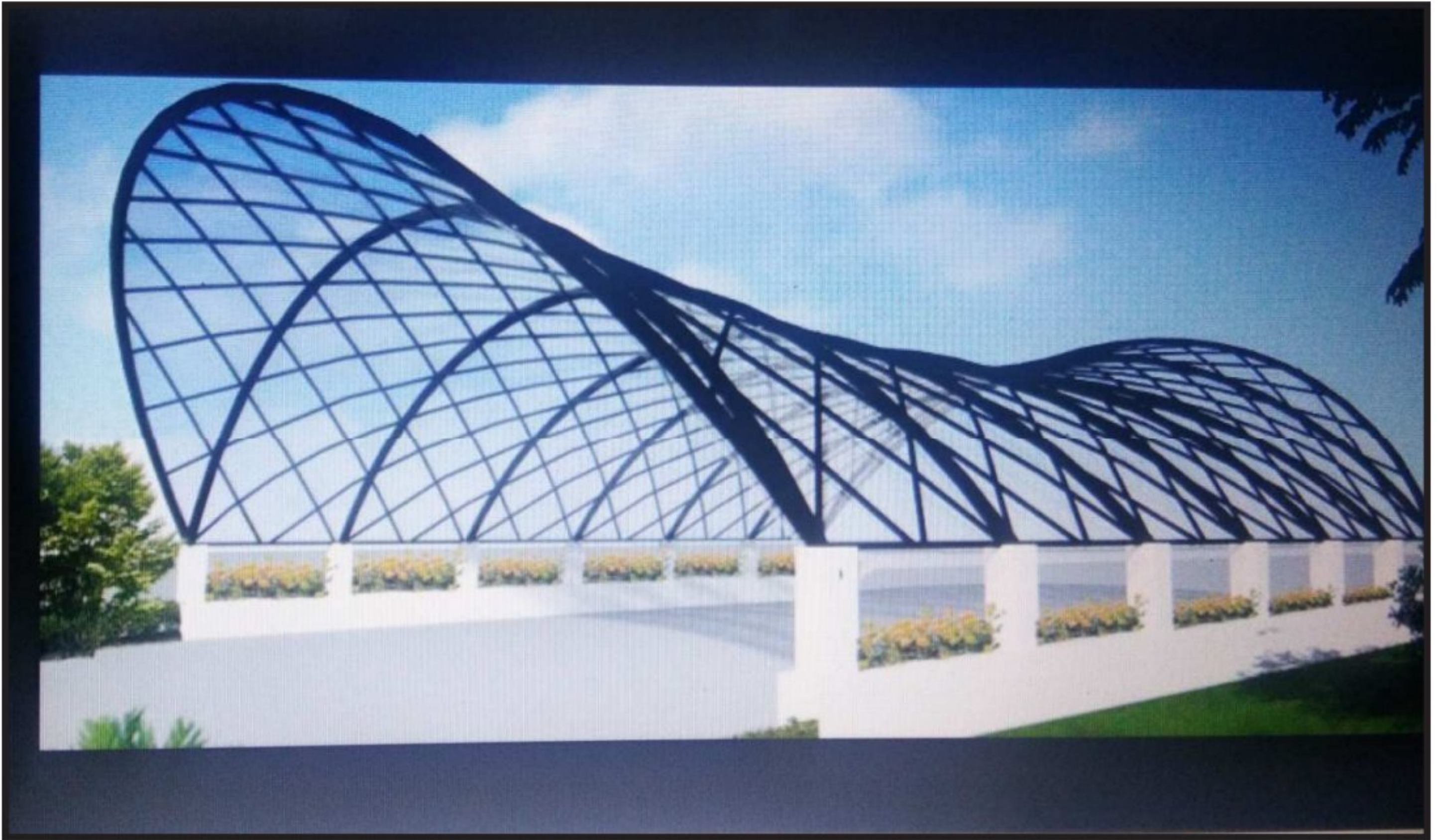


## Tensile Fabric Project Stadium





## Tensile Fabric Project Bus Stand



## Tensile Fabric Project Bus Stand



## **Tensile Fabric Project Stadium**



## **Tensile Fabric Project Guru Nanak Govind School Chennai**



**CAR PARKING**



**CAR PARKING**



**CAR PARKING**



**CAR PARKING**



## Tensile Fabric Project

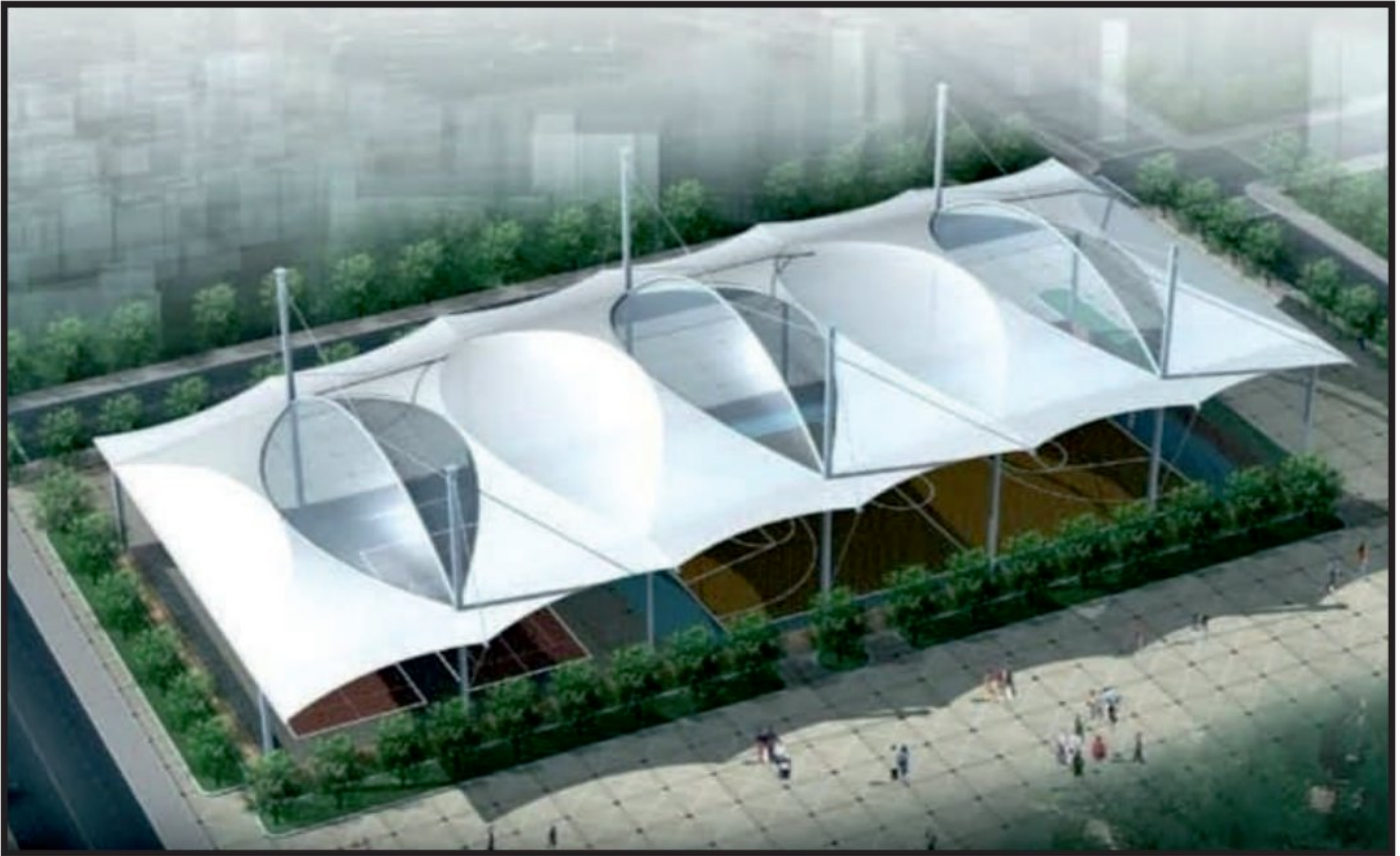


## Tensile Fabric Project





## Tensile Fabric Project



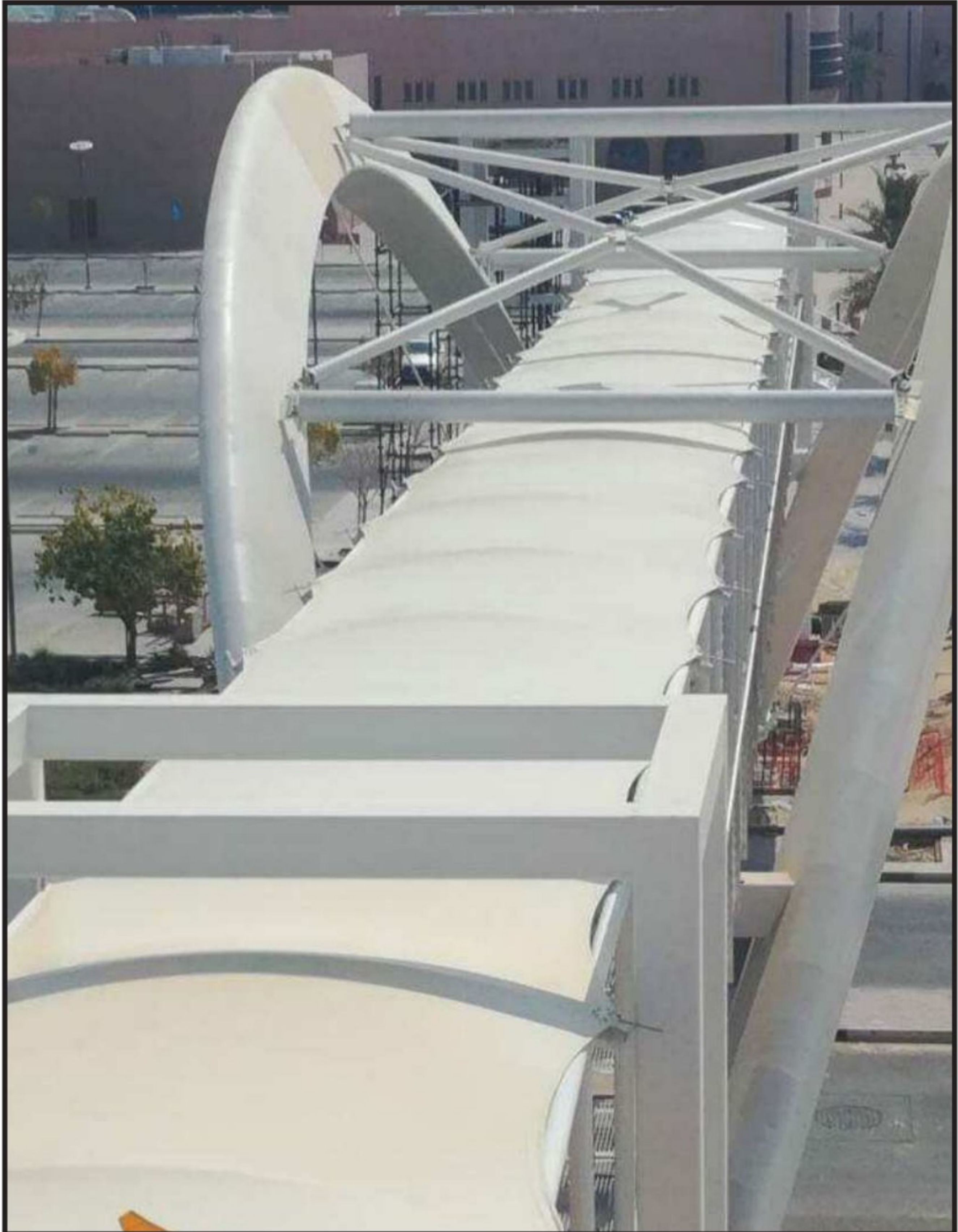
## Tensile Fabric Project



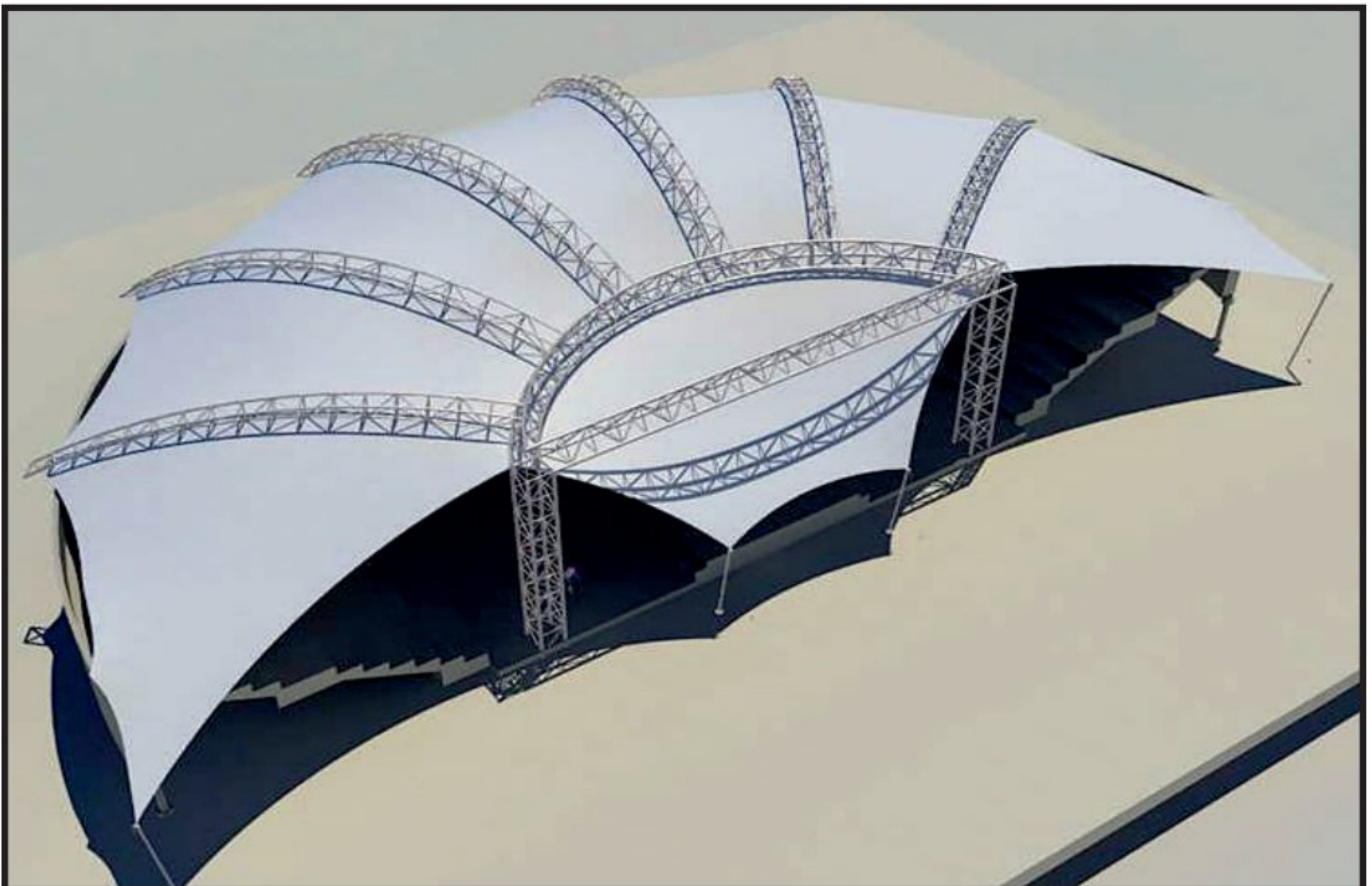
## Tensile Fabric Project



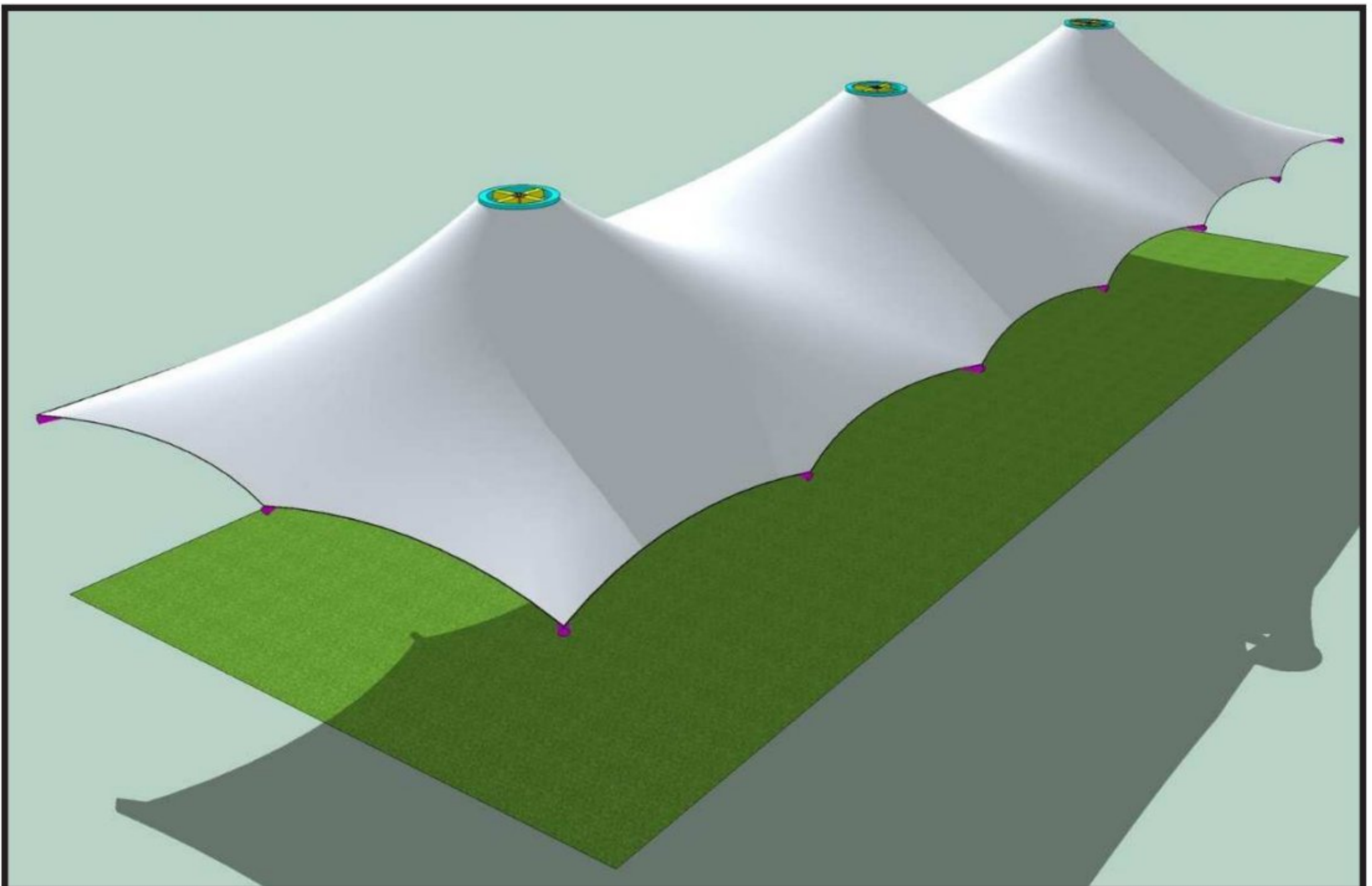
## Tensile Fabric Project



## Tensile Fabric Project



## Tensile Fabric Project



## Tensile Fabric Project

